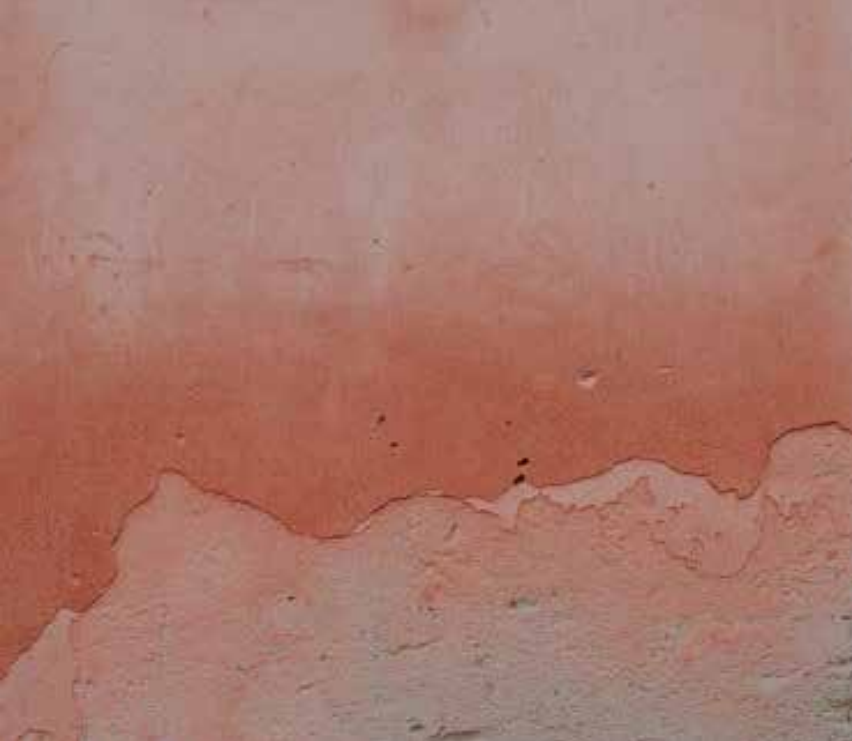


HBF TEXTILES

SPRING 2022 COLLECTION // TWO PART HARMONY



HBF
TEXTILES



Spring 2022 Collection

Two Part Harmony

Part One • Woven Fabrics

Spring 2022 Collection
Part One • Woven Fabrics



Crumpled Paper 1060



Skim Coat 1059









Dusted Fleck 1062



Rush 1063



-  Clean Impact Textile™
(91% Biodegradable)
-  Bleach Cleanable
-  Third Party Certified SCS
Indoor Advantage™ Gold
-  100% Post-Consumer
Recycled Content
-  No Stain Resistant
Finish Added
-  Approved for Outdoor Use



Crumpled Paper 1060



Crumpled Paper

With an education in printmaking and drawing, I have an appreciation for paper, its weight, and texture. The inspiration for Crumpled Paper came from crumpling different paper thicknesses to reach an optimum combination of shadow and light, which can be used as an evocative upholstery or wrapped panel application. This modern design features a 100% post-consumer recycled biodegradable* polyester.

PATTERN	1060
COLORWAYS	5
APPLICATION	Upholstery, wrapped panel, wallcovering
CONTENT	100% post-consumer recycled biodegradable* polyester
WIDTH	54" W
REPEAT	25 1/4" V x 28 1/4" H
FINISH	None
BACKING	None
ABRASION	100,000 double rubs (W)
ORIGIN	United States
FLAME RESISTANCE	California TB 117-2013 Section 1 (Pass), Class A rated ASTM E-84 (Unadhered)
MAINTENANCE	WS: Clean with upholstery shampoo or mild dry cleaning solvent. Bleach cleanable solutions up to 10% for cleaning difficult stains.
SUSTAINABILITY	100% post-consumer recycled content. Third party certified SCS Indoor Advantage™ Gold. NSF 336 Gold.
NOTES	Bleach cleanable. Large scale random repeat.
PRICE GRADE	\$40.00/yard HBF Grade D

**Clean Impact Textiles-91% biodegradation in 1,278 days (approximately 3 and a half years) under ASTM D5511 conditions.*











Skim Coat

From plaster to frosting, Skim Coat embodies a gestural layering of artistic opacities for a sophisticated upholstery or wrapped panel application. This elegant design features a 100% post-consumer recycled biodegradable* polyester.

PATTERN	1059
COLORWAYS	6
APPLICATION	Upholstery, wrapped panel, wallcovering
CONTENT	100% post-consumer biodegradable* polyester
WIDTH	54" W
REPEAT	15 2/5" V x 28 1/2" H
FINISH	None
BACKING	None
ABRASION	100,000 double rubs (W)
ORIGIN	United States
FLAME RESISTANCE	California TB 117-2013 Section 1 (Pass), Class A rated ASTM E-84 (Unadhered)
MAINTENANCE	WS: Clean with upholstery shampoo or mild dry cleaning solvent. Bleach cleanable solutions up to 10% for cleaning difficult stains.
SUSTAINABILITY	100% post-consumer recycled content. Third party certified, SCS Indoor Advantage™ Gold. NSF 336 Gold.
NOTES	Bleach cleanable. Large scale random repeat.
PRICE GRADE	\$40.00/yard HBF Grade D

**Clean Impact Textiles-91% biodegradation in 1,278 days (approximately 3 and a half years) under ASTM D5511 conditions.*



HB
F
TEXTILES

Skim Coat 1059





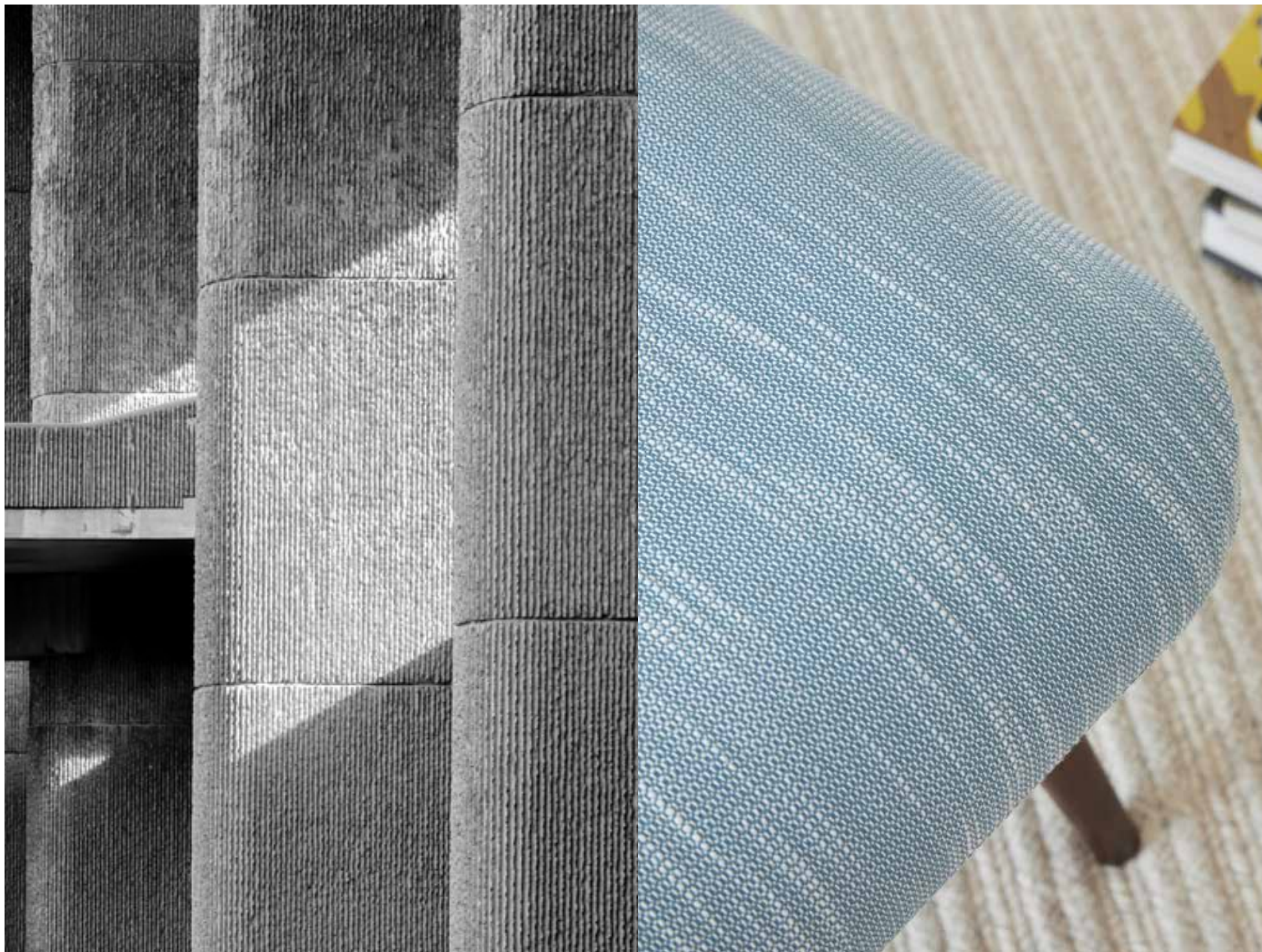
Dusted Fleck

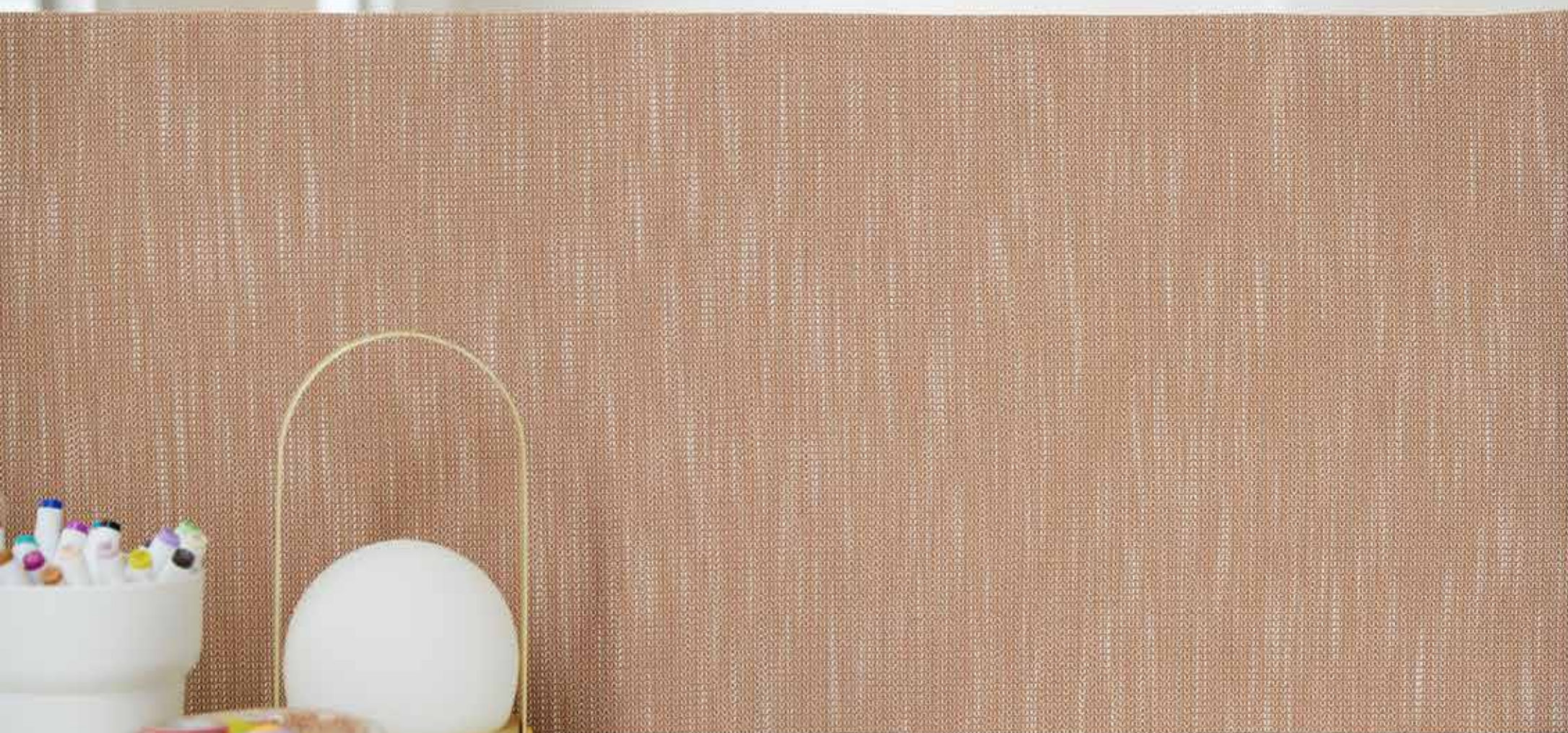
With 20 gradated hues, Dusted Fleck is our new sophisticated solid with a charming level of softness and patina. Featuring a speckled pile that gives a flecked interest to the dusted surface.

PATTERN	1062
COLORWAYS	20
APPLICATION	Upholstery
CONTENT	55% polyester, 23% acrylic 11% wool, 7% nylon, 4% silk
WIDTH	54" W
REPEAT	None
FINISH	Alta™ Plush
BACKING	None
ABRASION	70,000 double rubs (W)
ORIGIN	Italy
FLAME RESISTANCE	California TB 117-2013 Section 1 (Pass)
MAINTENANCE	WS: Clean with upholstery shampoo or mild dry cleaning solvent.
SUSTAINABILITY	Third party certified, SCS Indoor Advantage™ Gold.
PRICE GRADE	\$69.00/yard HBF Grade H









Rush

A striae pattern with movement, Rush has deep shades and pastels that partner well with Dusted Fleck, Crumpled Paper and Skim Coat. A consistent light colored yarn floats across the warp to give this fabric a linear charm.

PATTERN	1063
COLORWAYS	14
APPLICATION	Upholstery, wrapped panel
CONTENT	100% polyester
WIDTH	54" W
REPEAT	3/16" V x 1/8" H
FINISH	None
BACKING	Acrylic
ABRASION	51,000 double rubs (W)
ORIGIN	United States
FLAME RESISTANCE	California TB 117-2013 Section 1 (Pass), Class A rated ASTM E-84 (Unadhered)
MAINTENANCE	WS: Clean with upholstery shampoo or mild dry cleaning solvent. Bleach cleanable solutions up to 10% for cleaning difficult stains.
SUSTAINABILITY	Third party certified, SCS Indoor Advantage™ Gold.
NOTES	Bleach cleanable.
PRICE GRADE	\$27.00/yard HBF Grade B



HB
F
TEXTILES

Rush 1063



Spring 2022 Collection Pattern Color Rotation



Skim Coat 1059

- 10 Plaster
- 18 Gesso
- 46 Frosting
- 84 Concrete
- 57 Impasto
- 55 Fresco



Crumpled Paper 1060

- 18 Parchment
- 11 Waxed Paper
- 37 Kraft Paper
- 54 Rice Paper
- 99 Newspaper



Dusted Fleck 1062

- 23 Coconut
- 37 Sesame
- 46 Himalayan Salt
- 36 Cayenne
- 43 Confetti
- 35 Cinnamon
- 75 Pinot Noir
- 77 Petals
- 39 Truffle
- 22 Saffron
- 62 Pistachio
- 60 Matcha
- 67 Pine
- 54 Rain
- 57 Dusk Blue
- 59 Starry Night
- 11 Snow
- 18 Sandy
- 84 Smoke
- 89 Cracked Pepper



Rush 1063

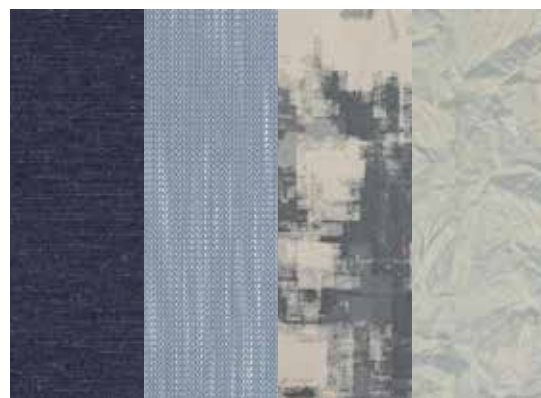
- 84 Smoke
- 18 Seal
- 25 Browned Butter
- 67 Forest Green
- 54 Rain Drop
- 56 Marina
- 62 Dried Herb
- 35 Cinnamon Sugar
- 57 Blue Sky
- 55 Blueberry
- 59 Midnight
- 77 Petals
- 90 Obsidian
- 99 Soot

Spring 2022 Collection Presentation Groups



Group A – Pistachio

1062-62	Dusted Fleck	Pistachio
1063-62	Rush	Dried Herb
1059-18	Skim Coat	Gesso
1060-11	Crumpled	Waxed Paper



Group B – Dusk Blue

1062-57	Dusted Fleck	Dusk Blue
1063-57	Rush	Blue Sky
1059-57	Skim Coat	Impasto
1060-54	Crumpled	Rice Paper



Group C – Himalayan Salt

1062-46	Dusted Fleck	Himalayan Salt
1063-35	Rush	Cinnamon Sugar
1059-46	Skim Coat	Frosting
1060-18	Crumpled	Parchment

Spring 2022 Collection

Two Part Harmony

Part Two • Coated Fabrics

*Faux Leathers Launching in May

Spring 2022 Collection
Part Two • Coated Fabrics



Well-Loved 1072



Notable Grain 1074



Inherent 1075



Clean Impact Textile™
(91% Biodegradable)



Bleach Cleanable



Third Party Certified SCS
Indoor Advantage™ Gold



100% Post-Consumer
Recycled Content



No Stain Resistant
Finish Added



Approved for Outdoor Use



Well-Loved

Like your favorite sweater or blankie, Well-Loved represents a very soft, very worn looking faux leather that feels like distressed leather. Specific to leather colors only, Well-loved reflects an antique leather appearance for oversized sofas that need a performance answer.

PATTERN	1072
COLORWAYS	13
APPLICATION	Upholstery, wallcovering
CONTENT	100% polycarbonate, polyurethane face
WIDTH	54" W
REPEAT	Random repeat
FINISH	None
BACKING	Polyester and rayon
ABRASION	300,000 double rubs* (W)
ORIGIN	Japan
FLAME RESISTANCE	California TB 117-2013 Section 1 (Pass), ASTM E84 (Adhered) – Class A
MAINTENANCE	W: Clean with water based shampoo and foam upholstery cleaner. Bleach cleanable solutions up to 20% for cleaning difficult stains.
SUSTAINABILITY	Meets Health Care Without Harm’s Healthy Interiors Criteria. Third party certified SCS Indoor Advantage™ Gold.
NOTES	Bleach cleanable.
PRICE GRADE	\$59.00/yard HBF Grade F

**Abrasion test results exceeding ACT Performance Guidelines are not an indicator of product lifespan. Multiple factors affect fabric durability and appearance retention.*





Notable Grain

Notable Grain has a larger than expected grain for a perfect option to leather. This material has a heavy weight feel that mimics the heftiness of a real leather and will upholster beautifully.

PATTERN	1074
COLORWAYS	14
APPLICATION	Upholstery, wallcovering
CONTENT	100% polycarbonate polyurethane face
WIDTH	54" W
REPEAT	None
FINISH	None
BACKING	Polyester, rayon
ABRASION	400,000 double rubs* (W)
ORIGIN	China
FLAME RESISTANCE	California TB 117-2013 Section 1 (Pass), ASTM E84 (Adhered) – Class A
MAINTENANCE	W: Clean with water based shampoo and foam upholstery cleaner. Bleach cleanable solutions up to 10% for cleaning difficult stains.
SUSTAINABILITY	Meets Health Care Without Harm’s Healthy Interiors Criteria. Third party certified SCS Indoor Advantage™ Gold.
NOTES	Approved for outdoor use. Bleach cleanable.
PRICE GRADE	\$59.00/yard HBF Grade F

**Abrasion test results exceeding ACT Performance Guidelines are not an indicator of product lifespan. Multiple factors affect fabric durability and appearance retention.*





Inherent

Inherently stain resistant, inherently anti-microbial, inherently flame resistant, and inherently Inherent! This coated fabric is the hero of all faux leathers with nothing added, it doesn't need it, it's silicone!

PATTERN	1075
COLORWAYS	18
APPLICATION	Upholstery
CONTENT	100% silicone (medical grade)
WIDTH	54" W
REPEAT	None
FINISH	Writer's Block® ink and denim resistant
BACKING	Polyester
ABRASION	225,000 double rubs* (W)
ORIGIN	China
FLAME RESISTANCE	California TB 117-2013 Section 1 (Pass)
MAINTENANCE	W: Clean with water based shampoo and foam upholstery cleaner. Bleach cleanable solutions up to 10% for cleaning difficult stains.
SUSTAINABILITY	Meets Health Care Without Harm's Healthy Interiors Criteria. Third party certified SCS Indoor Advantage™ Gold.
NOTES	Approved for outdoor use. Bleach cleanable.
PRICE GRADE	\$65.00/yard HBF Grade G

**Abrasion test results exceeding ACT Performance Guidelines are not an indicator of product lifespan. Multiple factors affect fabric durability and appearance retention.*



Spring 2022 Collection Pattern Color Rotation



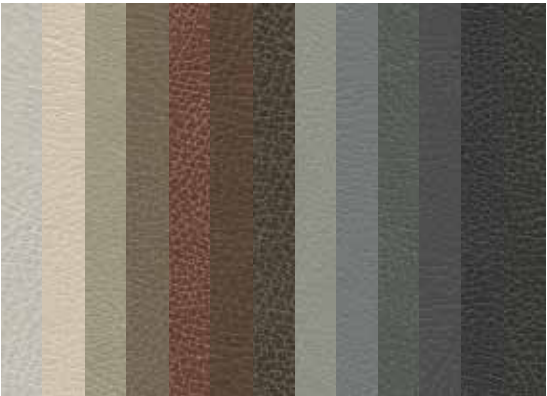
Inherent 1075

- | | | | |
|----|-------------|----|---------------|
| 10 | Crisp White | 30 | Brick |
| 11 | Ivory | 39 | Red Earth |
| 20 | Parchment | 83 | Zinc |
| 25 | Latte | 62 | Mint |
| 18 | Sage | 56 | Jade |
| 80 | Eucalyptus | 55 | Nautical |
| 63 | Soft Citrus | 59 | Midnight Blue |
| 37 | Mushroom | 85 | Shell Grey |
| 40 | Blush | 90 | Ebony |



Notable Grain 1074

- | | | | |
|----|--------------|----|-----------------|
| 10 | Alabaster | 39 | Walnut Brown |
| 11 | Bone | 83 | Ash Grey |
| 20 | Natural | 89 | Iron Grey |
| 25 | British Tan | 59 | Classic Navy |
| 30 | Saddle | 77 | Majestic Purple |
| 44 | Royal Claret | 90 | Charcoal Black |
| 37 | Smoke Grey | | |



Well-Loved 1072

- | | | | |
|----|----------------|----|-------------|
| 10 | Blankie | 80 | Sweater |
| 11 | Stuffed Animal | 85 | Faded Jeans |
| 20 | Khakis | 84 | Beanie |
| 35 | Recipe | 88 | Workboots |
| 25 | Teddy Bear | 95 | Briefcase |
| 30 | Armchair | 93 | Novel |
| 39 | Sofa | | |

Spring 2022 Collection

Two Part Harmony