

HBF TEXTILES

FALL 2021 COLLECTION



Fall 2021 Collection

A few years ago, I went on an awakening journey throughout Norway. It was an immersive adventure that encompassed visual delights, tactile glee, and culinary experiments which opened me to new perspectives. From the smallest details in the curved metal door, to the hand-cut stone pavers fitted together like a giant jigsaw puzzle, to the richly colored hand-woven rugs, to the Norwegian mid-century patterns in the shop displays, these snapshots became the foundation for the Fall 2021 collection.

- Mary Jo Miller





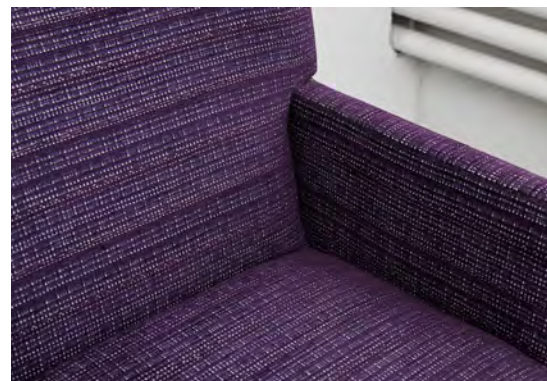
Fall 2021 Collection



Polygone 1026



Denim Wash 1053



Chenille Striae 1058



Clutch 719



Habu 1049



Cloverleaf 1055



Cuddle Up 1056



HBF
TEXTILES

Polygone 1026



Polygone

My trip to Norway included a visit to Vigeland Park, in Oslo, home of the amazing sculptures of emotion in granite and the handmade pavers that mimics polygons creating a giant jigsaw puzzle.

PATTERN	1026
COLORWAYS	5
APPLICATION	Upholstery
CONTENT	83% polyester, 17% acrylic
WIDTH	56" W
REPEAT	13 1/4" V x 28 1/2" H
FINISH	None
BACKING	None
ABRASION	100,000 double rubs (W)
ORIGIN	Germany
FLAME RESISTANCE	California TB 117-2013 Section 1 (Pass), NFPA 260 (UFAC Class 1)
MAINTENANCE	WS: Clean with upholstery shampoo or mild dry cleaning solvent. Bleach cleanable solutions up to 10% for cleaning difficult stains.
SUSTAINABILITY	Third party certified, SCS Indoor Advantage™ Gold. Meets HCWH Healthy Interiors Criteria.
NOTES	Large scale repeat. Bleach cleanable.
PRICE GRADE	\$83.00/yard HBF Grade K





HBF
TEXTILES



Denim Wash 1053



Denim Wash

Reminiscent of a hand-woven linen scarf, a practical classic for Norwegian clothing. Denim Wash gives us a distressed basket weave effect through both color and structure.

PATTERN	1053
COLORWAYS	17
APPLICATION	Upholstery, wrapped panel
CONTENT	50% post-consumer recycled polyester, 50% polyester
WIDTH	54" W
REPEAT	None
FINISH	Stain resistant
BACKING	Light acrylic
ABRASION	100,000 double rubs (W)
ORIGIN	Mexico
FLAME RESISTANCE	California TB 117-2013 Section 1 (Pass), Class A rated ASTM E-84 (unadhered), NFPA 260 (UFAC Class 1)
MAINTENANCE	WS: Clean with upholstery shampoo or mild dry cleaning solvent.
SUSTAINABILITY	50% recycled content. Third party certified, SCS Indoor Advantage™ Gold.
NOTES	Piece dyed
PRICE GRADE	\$28.00/yard HBF Grade A

HBF
TEXTILES



Denim Wash 1053



**Denim Wash 1053
Wrapped Panel**



HBF
TEXTILES

Chenille Striae 1058



Chenille Striae

Like a well-loved woven rug, Chenille Striae peeks through with rayon accents, like so many of the textured fabrics we have cherished over the years.

PATTERN	1058
COLORWAYS	10
APPLICATION	Upholstery
CONTENT	66% rayon, 27% polyester, 7% post-consumer recycled polyester
WIDTH	55" W
REPEAT	4 1/2" V x 3 1/2" H
FINISH	None
BACKING	Acrylic
ABRASION	100,000 double rubs (W)
ORIGIN	United States
FLAME RESISTANCE	California TB 117-2013 Section 1 (Pass), NFPA 260 (UFAC Class 1)
MAINTENANCE	WS: Clean with upholstery shampoo or mild dry cleaning solvent.
SUSTAINABILITY	7% recycled content. Third party certified, SCS Indoor Advantage™ Gold. Meets HCWH Healthy Interiors Criteria
PRICE GRADE	\$35.00/yard HBF Grade B

HB
TEXTILES



Chenille Striae 1058





Clutch

Our Clutch leather comes through in a pinch, as a semi-aniline dyed leather, with consistent coloring across the hide for better yield, offers bleach cleanability (10:1 ratio), great price, well stocked and in truly classic leather colors.

PATTERN	719
COLORWAYS	9
APPLICATION	Upholstery
CONTENT	Top grain leather, semi aniline dyed
REPEAT	None
FINISH	Protective finish
BACKING	None
ORIGIN	Italy
FLAME RESISTANCE	California TB 117-2013 Section 1 (Pass), NFPA 260 (UFAC Class 1)
MAINTENANCE	WS: Clean with upholstery shampoo or mild dry cleaning solvent. Bleach cleanable solutions up to 10% for cleaning difficult stains.
SUSTAINABILITY	Third party certified, SCS Indoor Advantage™ Gold. REACH certified.
NOTES	Bleach cleanable
PRICE GRADE	\$9.00/sq. ft. HBF Grade Lea I





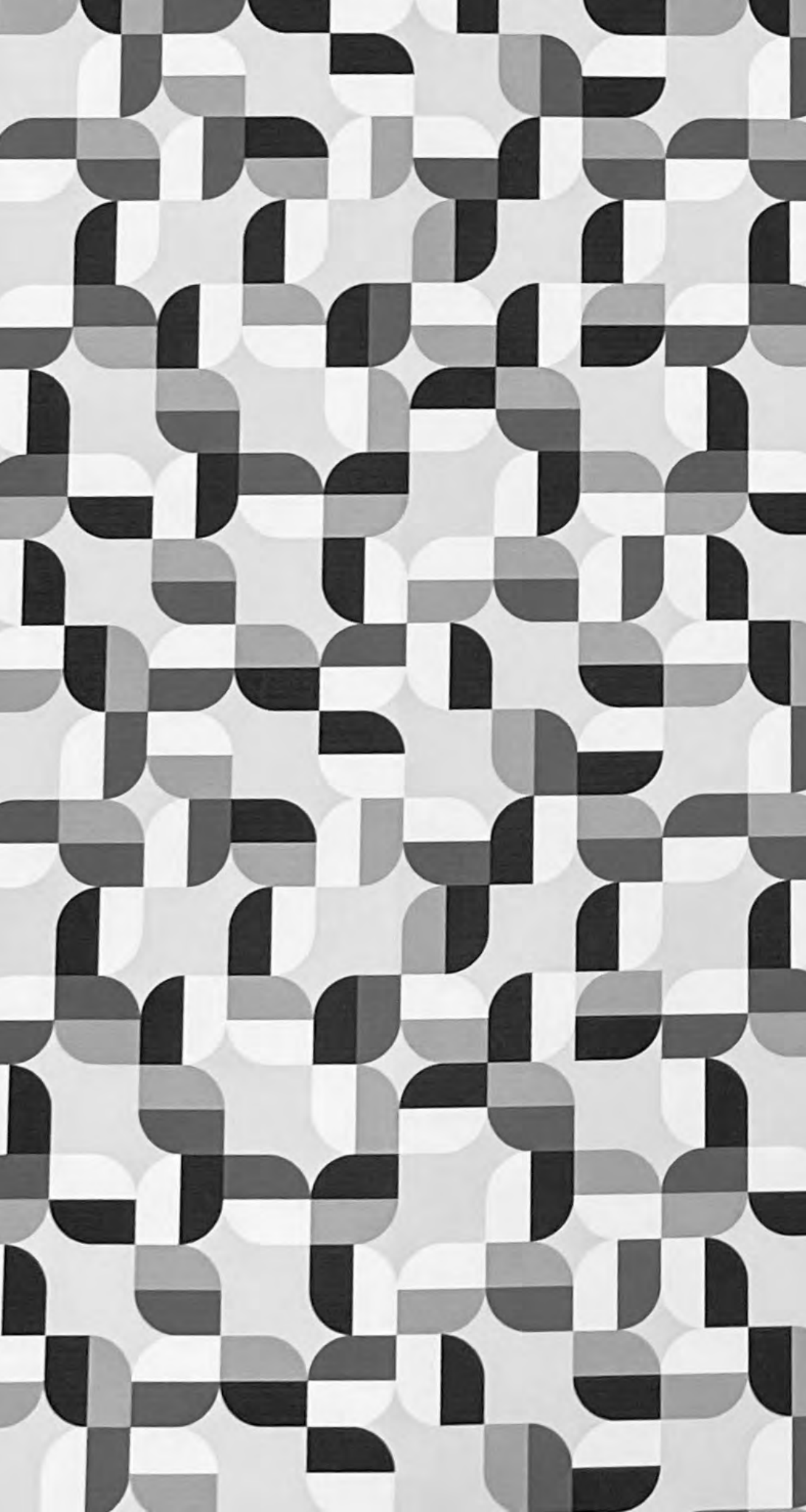


Habu

This pattern recalls the handmade qualities of crocheted shawls with loose weaves and special yarns.

PATTERN	1049
COLORWAYS	7
APPLICATION	Upholstery
CONTENT	64% polyester, 35% post-consumer recycled polyester, 1% nylon
WIDTH	55" W
REPEAT	6 5/8" V x 7 1/8" H
FINISH	None
BACKING	Acrylic
ABRASION	63,000 double rubs (W)
ORIGIN	United States
FLAME RESISTANCE	California TB 117-2013 Section 1 (Pass), Class A rated ASTM E-84 (unadhered), NFPA 260 (UFAC Class 1)
MAINTENANCE	WS: Clean with upholstery shampoo or mild dry cleaning solvent. Bleach cleanable solutions up to 10% for cleaning difficult stains.
SUSTAINABILITY	35% recycled content. Third party certified, SCS Indoor Advantage™ Gold. Meets HCWH Healthy Interiors Criteria.
NOTES	Random repeat. Bleach cleanable.
PRICE GRADE	\$36.00/yard HBF Grade D





HB
TEXTILES

Cloverleaf 1055



Fall 2021 Collection

HBF
TEXTILES

Cloverleaf

Cloverleaf is the anthesis of a Norwegian mid-century design I saw in a shop window.

PATTERN	1055
COLORWAYS	8
APPLICATION	Upholstery, wrapped panel
CONTENT	81% polyester, 19% post-consumer recycled polyester
WIDTH	56" W
REPEAT	9 1/2' V x 9 1/2" H
FINISH	None
BACKING	Acrylic
ABRASION	63,000 double rubs (W)
ORIGIN	United States
FLAME RESISTANCE	California TB 117-2013 Section 1 (Pass), NFPA 260 (UFAC Class 1)
MAINTENANCE	WS: Clean with upholstery shampoo or mild dry cleaning solvent. Bleach cleanable solutions up to 10% for cleaning difficult stains.
SUSTAINABILITY	19% recycled content. Third party certified, SCS Indoor Advantage™ Gold. Meets HCWH Healthy Interiors Criteria.
NOTES	Large scale repeat. Bleach cleanable.
PRICE GRADE	\$49.00/yard HBF Grade F





HBF
TEXTILES

Cuddle Up 1056



Cuddle Up

Just like its namesake, this material is so cozy and inviting it makes any furniture style look like it’s upholstered in a wooly Norwegian sweater.

PATTERN	1056
COLORWAYS	6
APPLICATION	Upholstery
CONTENT	80% olefin, 20% polyester
WIDTH	56” W
REPEAT	1/2” V x 3/8” H
FINISH	None
BACKING	Acrylic
ABRASION	51,000 double rubs (W)
ORIGIN	United States
FLAME RESISTANCE	California TB 117-2013 Section 1 (Pass), NFPA 260 (UFAC Class 1)
MAINTENANCE	WS: Clean with upholstery shampoo or mild dry cleaning solvent. Bleach cleanable solutions up to 10% for cleaning difficult stains.
SUSTAINABILITY	Third party certified, SCS Indoor Advantage™ Gold. Meets HCWH Healthy Interiors Criteria.
NOTES	Bleach cleanable
PRICE GRADE	\$33.00/yard HBF Grade B

HBF
TEXTILES



Cuddle Up 1056

Fall 2021 Collection Pattern Color Rotation



Polygone 1026

- 41 Himalayan Salt
- 68 Lagoon
- 55 Sapphire
- 53 Royalty
- 46 Chili Pepper



Denim Wash 1053

- 18 Grey Fox
- 25 Brownd Butter
- 35 Cinnamon Sugar
- 45 Popsicle
- 36 Warm Clay
- 41 Kiss & Tell
- 75 Claret
- 44 Pucker Up
- 67 Forest Green
- 62 Agave
- 56 Emerald City
- 55 Sapphire
- 52 Bell Bottoms
- 59 Aged Indigo
- 77 Violet Shades
- 87 Steel Grey
- 90 Obsidian



Chenille Striae 1058

- 10 White Rabbit
- 11 Half & Half
- 17 Jagged Rock
- 23 Golden Hour
- 59 Aged Indigo
- 46 Chili Pepper
- 60 Cactus
- 78 Dark Iris
- 75 Claret
- 89 Shadow



Clutch 719

- 11 Pearls
- 17 Pic
- 18 Win
- 23 Outfit
- 35 Purse
- 55 Play
- 83 Game
- 84 Bangle
- 90 Band



Habu 1049

- 37 Shifting Sands
- 63 Turmeric Yellow
- 30 Golden Brown
- 58 Steel Blue
- 46 Spicy Red
- 77 Violet Shades
- 84 Gopher Gray



Cloverleaf 1055

- 23 Yellow/Gold
- 85 Orange/Navy
- 67 Aqua/Green
- 40 Pink/Rust
- 55 Turquoise/Blue
- 60 Pink/Olive
- 44 Red/Orange
- 57 Blue/Purple



Cuddle Up 1056

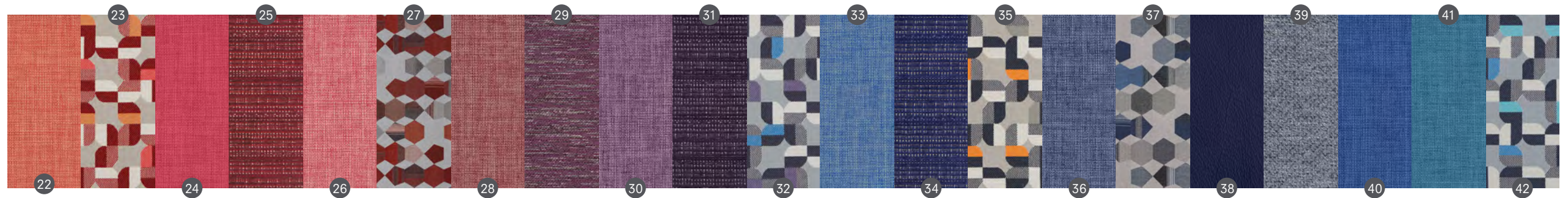
- 10 White Rabbit
- 11 Half & Half
- 23 Golden Hour
- 18 Grey Fox
- 55 Sapphire
- 90 Obsidian

Fall 2021 Colors Collection Rotations

HBF
TEXTILES

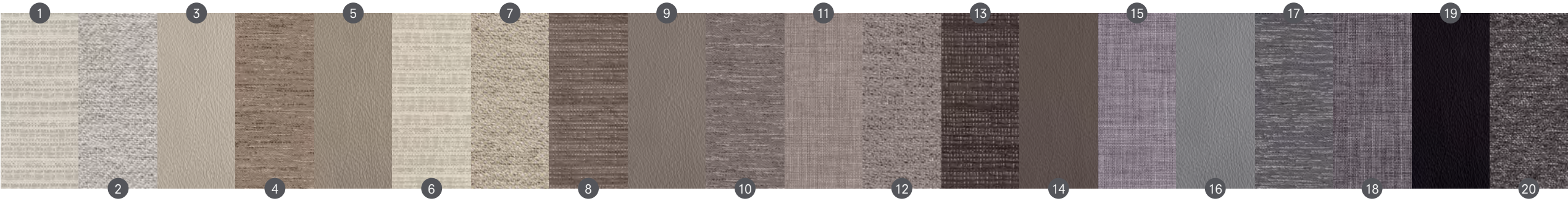


1	1055-67	Cloverleaf	Aqua/Green	8	1055-23	Cloverleaf	Yellow/Gold	15	1058-23	Chenille Striae	Golden Hour
2	1053-62	Denim Wash	Agave	9	1053-25	Denim Wash	Browned Butter	16	1053-35	Denim Wash	Cinnamon Sugar
3	1053-67	Denim Wash	Forest Green	10	1056-23	Cuddle Up	Golden Hour	17	1055-40	Cloverleaf	Pink/Rust
4	1026-68	Polygone	Lagoon	11	719-23	Clutch	Outfit	18	1058-46	Chenille Striae	Chili Pepper
5	1058-60	Chenille Striae	Cactus	12	1026-53	Polygone	Royalty	19	1026-41	Polygone	Himalayan Salt
6	1055-60	Cloverleaf	Pink/Olive	13	1049-30	Habu	Golden Brown	20	1049-46	Habu	Spicy Red
7	1049-63	Habu	Turmeric Yellow	14	719-35	Clutch	Purse	21	1053-36	Denim Wash	Warm Clay



22	1053-45	Denim Wash	Popsicle	29	1049-77	Habu	Violet Shades	36	1053-59	Denim Wash	Aged Indigo
23	1055-44	Cloverleaf	Red/Orange	30	1053-77	Denim Wash	Violet Shades	37	1026-55	Polygone	Sapphire
24	1053-41	Denim Wash	Kiss & Tell	31	1058-78	Chenille Striae	Dark Iris	38	719-55	Clutch	Play
25	1058-75	Chenille Striae	Claret	32	1055-57	Cloverleaf	Blue/Purple	39	1056-55	Cuddle Up	Sapphire
26	1053-44	Denim Wash	Pucker Up	33	1053-55	Denim Wash	Sapphire	40	1053-52	Denim Wash	Bell Bottoms
27	1026-46	Polygone	Chili Pepper	34	1058-59	Chenille Striae	Aged Indigo	41	1053-56	Denim Wash	Emerald City
28	1053-75	Denim Wash	Claret	35	1055-85	Cloverleaf	Orange/Navy	42	1055-55	Cloverleaf	Turquoise/Blue

Fall 2021 Neutrals Collection Rotations



1	1058-10	Chenille Striae	White Rabbit	8	1058-17	Chenille Striae	Jagged Rock	15	1053-87	Denim Wash	Steel Grey
2	1056-10	Cuddle Up	White Rabbit	9	719-18	Clutch	Win	16	719-83	Clutch	Game
3	719-11	Clutch	Pearls	10	1049-84	Habu	Gopher Gray	17	1049-58	Habu	Steel Blue
4	1049-37	Habu	Shifting Sands	11	1053-18	Denim Wash	Grey Fox	18	1053-90	Denim Wash	Obsidian
5	719-17	Clutch	Pic	12	1056-18	Cuddle Up	Grey Fox	19	719-90	Clutch	Band
6	1058-11	Chenille Striae	Half & Half	13	1058-89	Chenille Striae	Shadow	20	1056-90	Cuddle Up	Obsidian
7	1056-11	Cuddle Up	Half & Half	14	719-84	Clutch	Bangle				

Fall 2021 Collection