

# HBF TEXTILES

UP COLLECTION BY KELLY HARRIS SMITH







# UP Collection

## Kelly Harris Smith



## Kelly Harris Smith

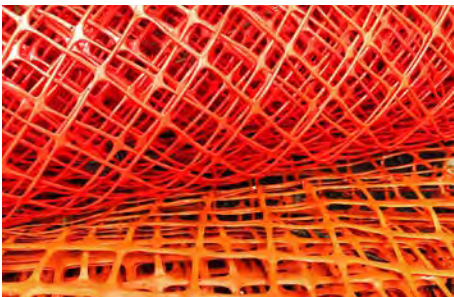
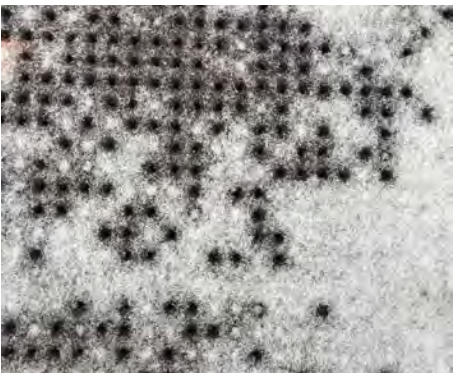
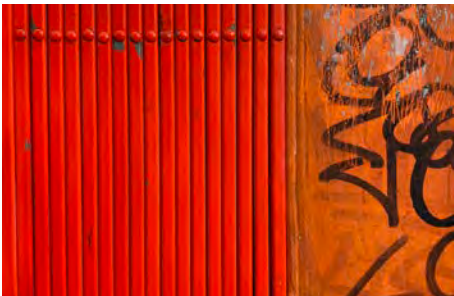
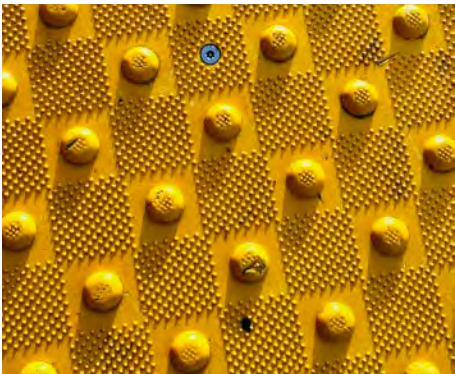
Kelly Harris Smith is a designer, creative director and entrepreneur specializing in natural and sustainable materials for commercial and residential interior design. Kelly's award-winning designs are distinctive for their pattern, color, and innovative functionality. Whether she's designing textiles, interior architecture installations or running Minni, a community creative space offering art + design classes for young children, Kelly begins her process with a thoughtful analysis of how people will interact with the product and the environment. Recognition includes the "Emerging Product Designer Award" at NYCxDesign, being named one of The Boston Globe's "25 Most Stylish Bostonians" and having exclusive designs included in the MoMA Design Store. Smith trained as an architect at Northeastern University and resides in Boston with her husband and two young children.



**“Living in the city, pattern is all around. I look up a lot. I’m an avid cloud watcher and architectural façade enthusiast, but I’m also looking down as I’m walking around, noticing brick patterns, seemingly unglamorous utility covers, and sewer grates. Patterns, textures, and colors are constantly changing throughout the day.”**

**– Kelly Harris Smith**



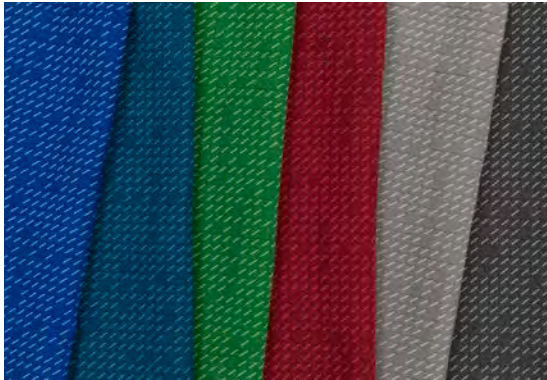




UP Collection



Uptown 1039



Upstart 1042



Upscale 1040



Upbeat 1036



Uptick 1041









# Uptown

Uptown takes inspiration from the often-overlooked industrial patterns of a city. Utility covers, sewer grates, and chain link fences define the vocabulary, while micro patterning within geometric shapes narrate the imagery of a daily walk around the city.

PATTERN	1039
COLORWAYS	6
APPLICATION	Upholstery, wrapped panel, systems panel
CONTENT	43% post industrial recycled polyester, 34% polyester, 23% post consumer recycled polyester
WIDTH	57" W
REPEAT	19 1/2" V x 57" H
WEIGHT	15.71 ounces per linear yard
FINISH	None
BACKING	Acrylic
ABRASION	54,000 double rubs (W)
ORIGIN	United States
FLAME RESISTANCE	California TB 117-2013 Section 1 (Pass), Class A rated ASTM E-84 (unadhered)
MAINTENANCE	WS: Clean with upholstery shampoo or mild dry cleaning solvent. Bleach cleanable solutions up to 20% for cleaning difficult stains.
SUSTAINABILITY	66% recycled content. Third party certified, SCS Indoor Advantage™ Gold.
PRICE   GRADE	\$46.00/yard   HBF Grade F











HBF  
TEXTILES

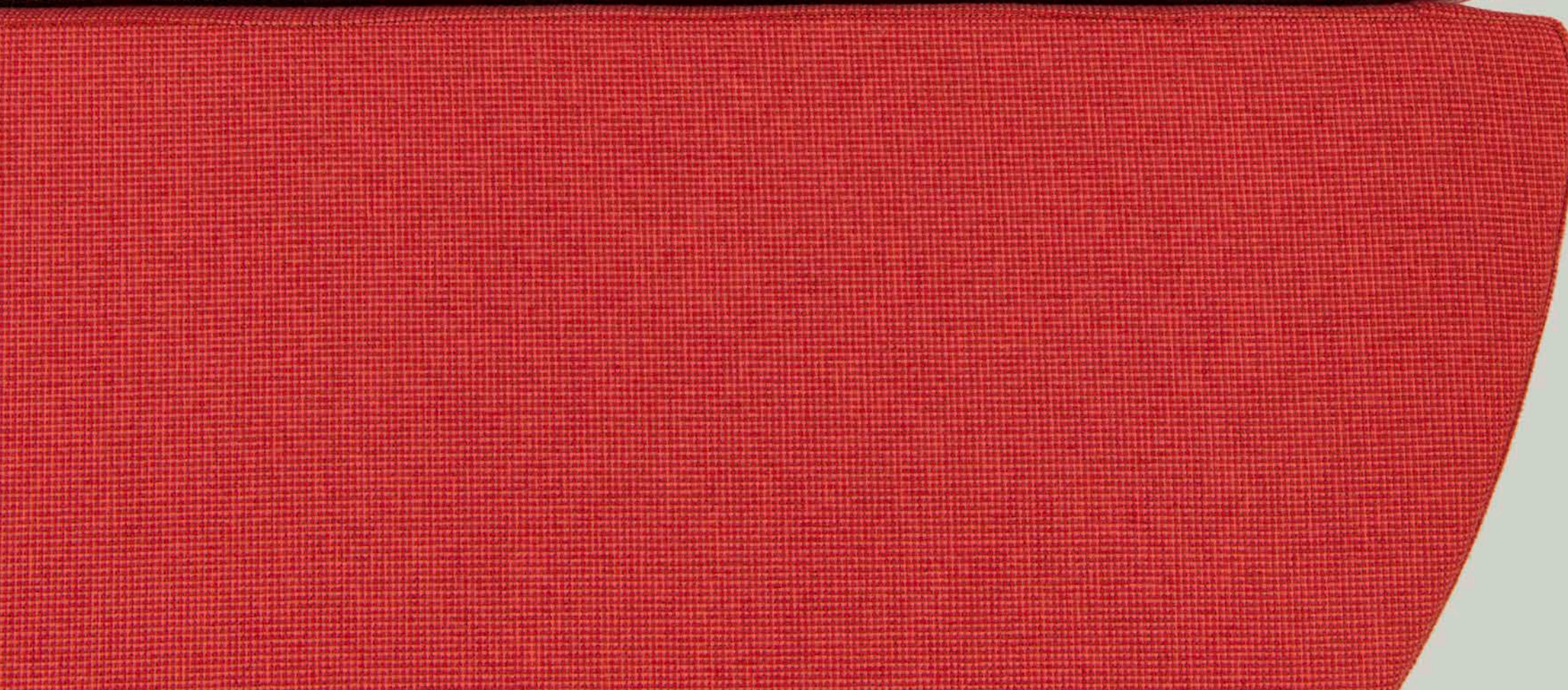
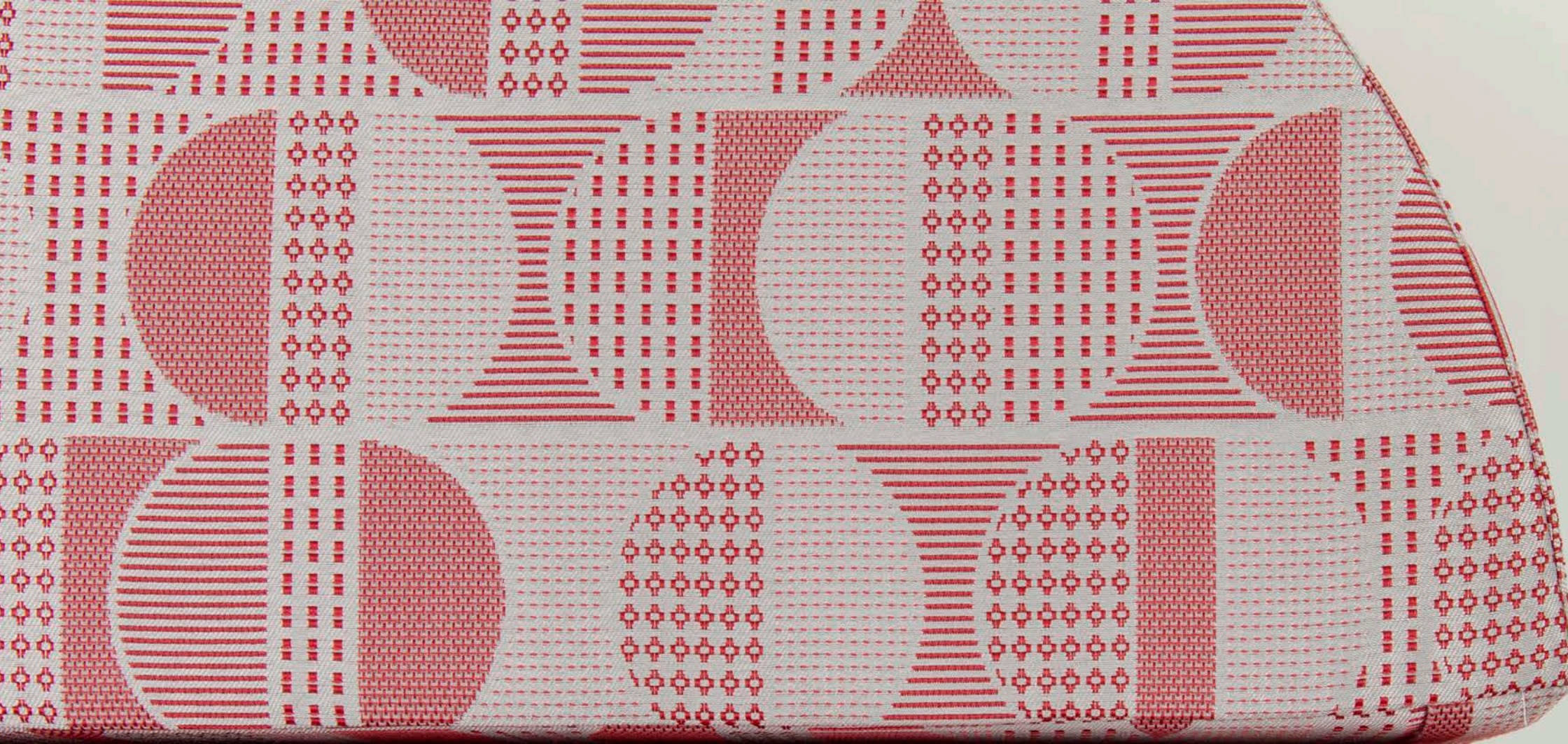
Uptown 1039







HB  
F  
TEXTILES



Uptown 1039  
Upbeat 1036









# Upstart

Pattern is found even on the gloomiest of days. Upstart mimics the streaks of rain on the bus windows of our morning commute. The intentional spacing of the droplets creates an overall texture for this matelass  construction.

PATTERN	1042
COLORWAYS	6
APPLICATION	Upholstery, wrapped panel, systems panel
CONTENT	58% polyester, 42% post consumer recycled polyester
WIDTH	54" W
REPEAT	21 1/4" V x 11 3/4" H
WEIGHT	22.92 ounces per linear yard
FINISH	None
BACKING	None
ABRASION	80,000 double rubs (W)
ORIGIN	Canada
FLAME RESISTANCE	California TB 117-2013 Section 1 (Pass), Class A rated ASTM E-84 (unadhered)
MAINTENANCE	WS: Clean with upholstery shampoo or mild dry cleaning solvent
SUSTAINABILITY	42% recycled content. Third party certified, SCS Indoor Advantage™ Gold. NSF 336 Gold.
PRICE   GRADE	\$64.00/yard   HBF Grade H









Upstart 1042  
Uptown 1039



A close-up photograph of a blue office chair. The chair's fabric features a repeating pattern of small, white, slanted dashes. The stitching is a contrasting brown color, visible along the seams of the seat and backrest. The chair is positioned against a light-colored, textured wall.

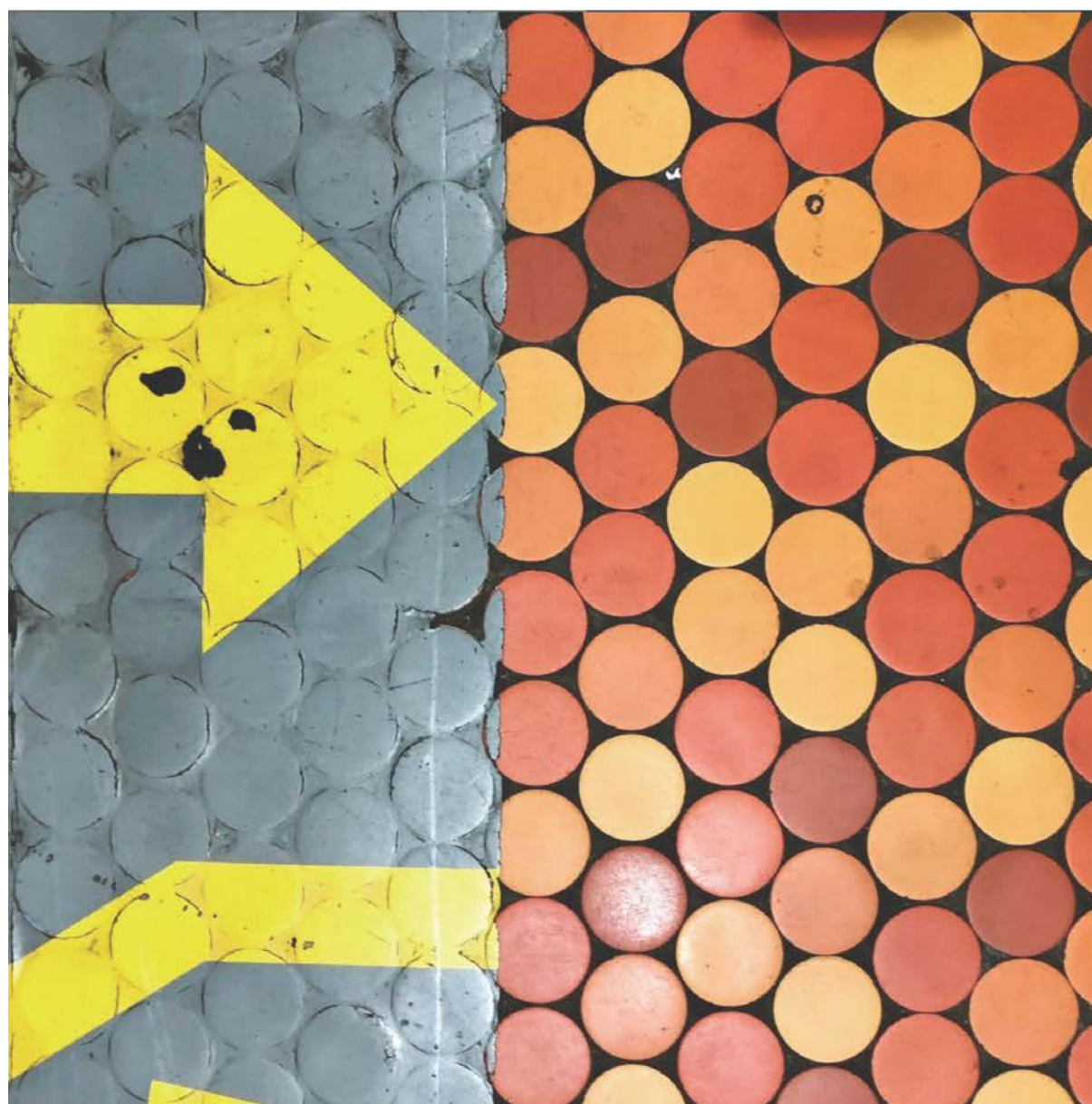
HBF  
TEXTILES

Upstart 1042













# Upscale

A modern take on traffic signs, Upscale leads us through the bustling cityscape. The urban arrow suggests movement with a bold shift of color and an exaggerated play on scale. Upscale is a nod to the irony of finding order within chaos.

PATTERN	1040
COLORWAYS	9
APPLICATION	Upholstery, wrapped panel, systems panel
CONTENT	77% post consumer recycled polyester, 23% polyester
WIDTH	57" W
REPEAT	30 1/4" V x 29 1/4" H
WEIGHT	18.18 ounces per linear yard
FINISH	None
BACKING	Acrylic
ABRASION	51,000 double rubs (W)
ORIGIN	United States
FLAME RESISTANCE	California TB 117-2013 Section 1 (Pass), Class A rated ASTM E-84 (unadhered)
MAINTENANCE	WS: Clean with upholstery shampoo or mild dry cleaning solvent. Bleach cleanable solutions up to 20% for cleaning difficult stains.
SUSTAINABILITY	77% recycled content. Third party certified, SCS Indoor Advantage™ Gold.
PRICE   GRADE	\$52.00/yard   HBF Grade F













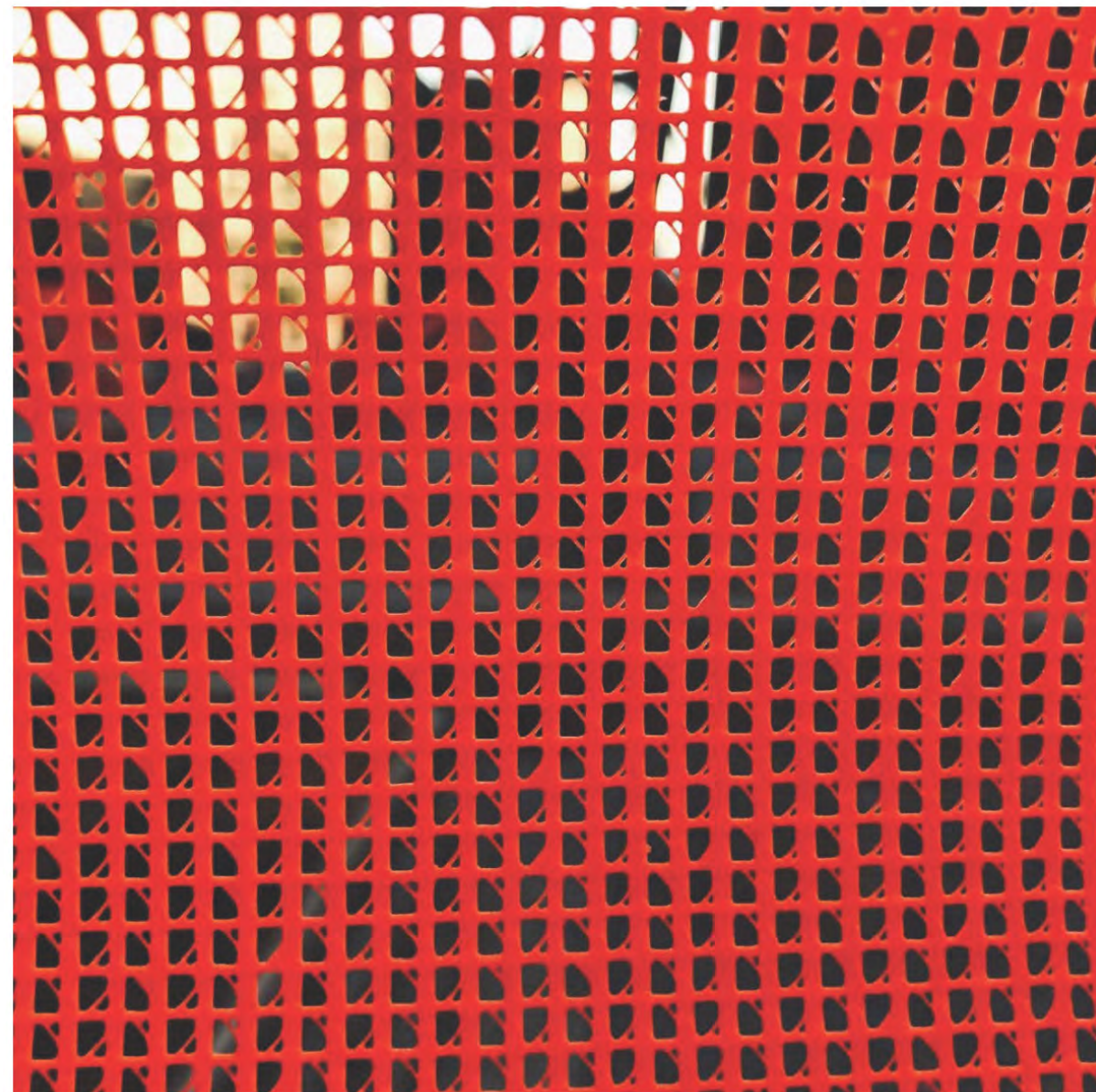
















# Upbeat

Upbeat is an understated tight grid with tonal, subtle layers of color. Upbeat speaks to the evolution of color and shadow throughout the day and the appreciation of texture up close vs. far away. The inspiration sparked from the observation of scaffolding mesh from different angles on cloudy vs. sunny days.

PATTERN	1036
COLORWAYS	15
APPLICATION	Upholstery, wrapped panel, systems panel
CONTENT	51% post consumer recycled polyester, 49% polyester
WIDTH	54" W
REPEAT	None
WEIGHT	13.00 ounces per linear yard
FINISH	None
BACKING	Acrylic
ABRASION	100,000 double rubs (W)
ORIGIN	United States
FLAME RESISTANCE	California TB 117-2013 Section 1 (Pass), Class A rated ASTM E-84 (unadhered)
MAINTENANCE	WS: Clean with upholstery shampoo or mild dry cleaning solvent. Bleach cleanable solutions up to 10% for cleaning difficult stains.
SUSTAINABILITY	51% recycled content. Third party certified, SCS Indoor Advantage™ Gold.
PRICE   GRADE	\$24.00/yard   HBF Grade A











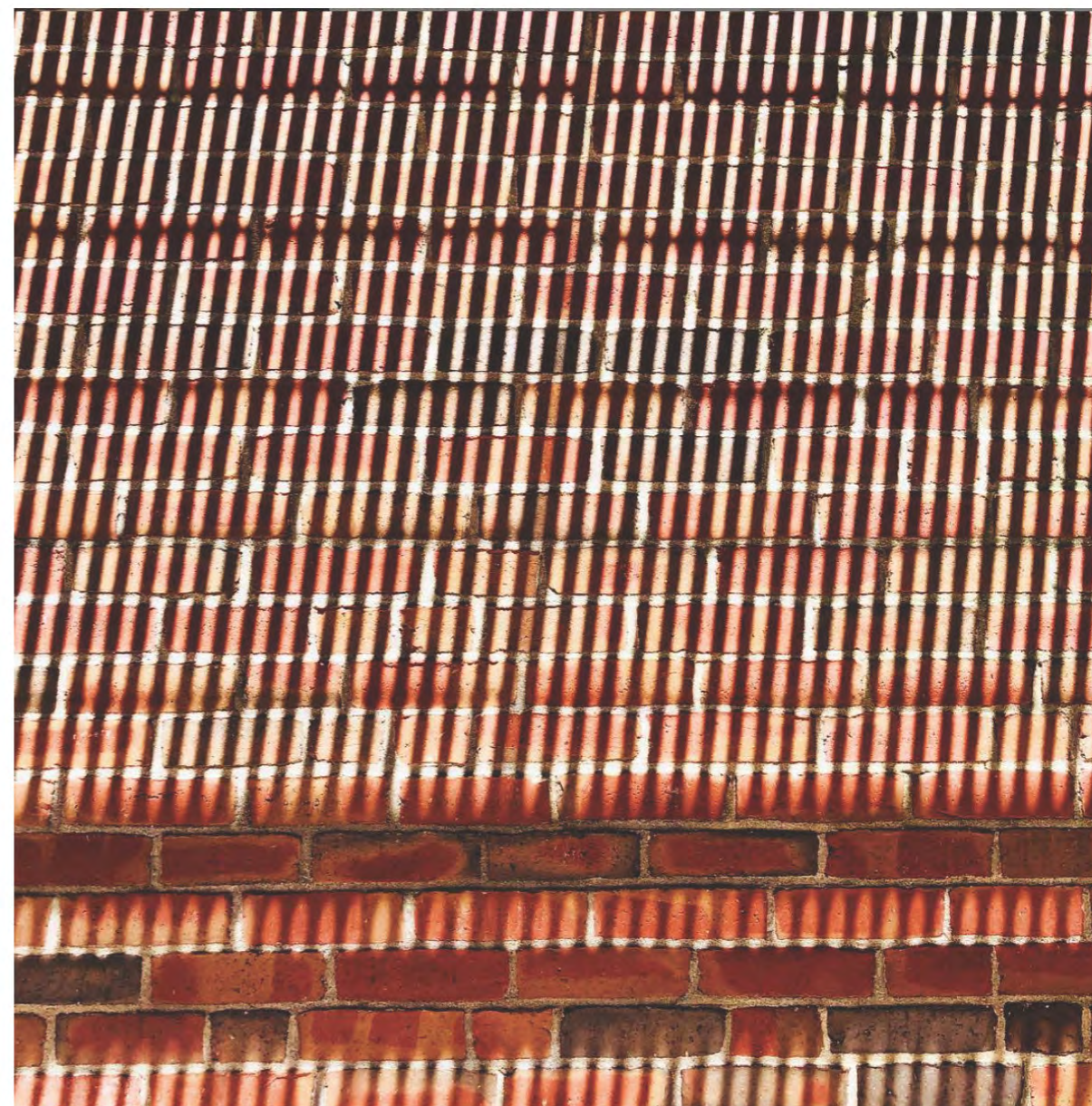
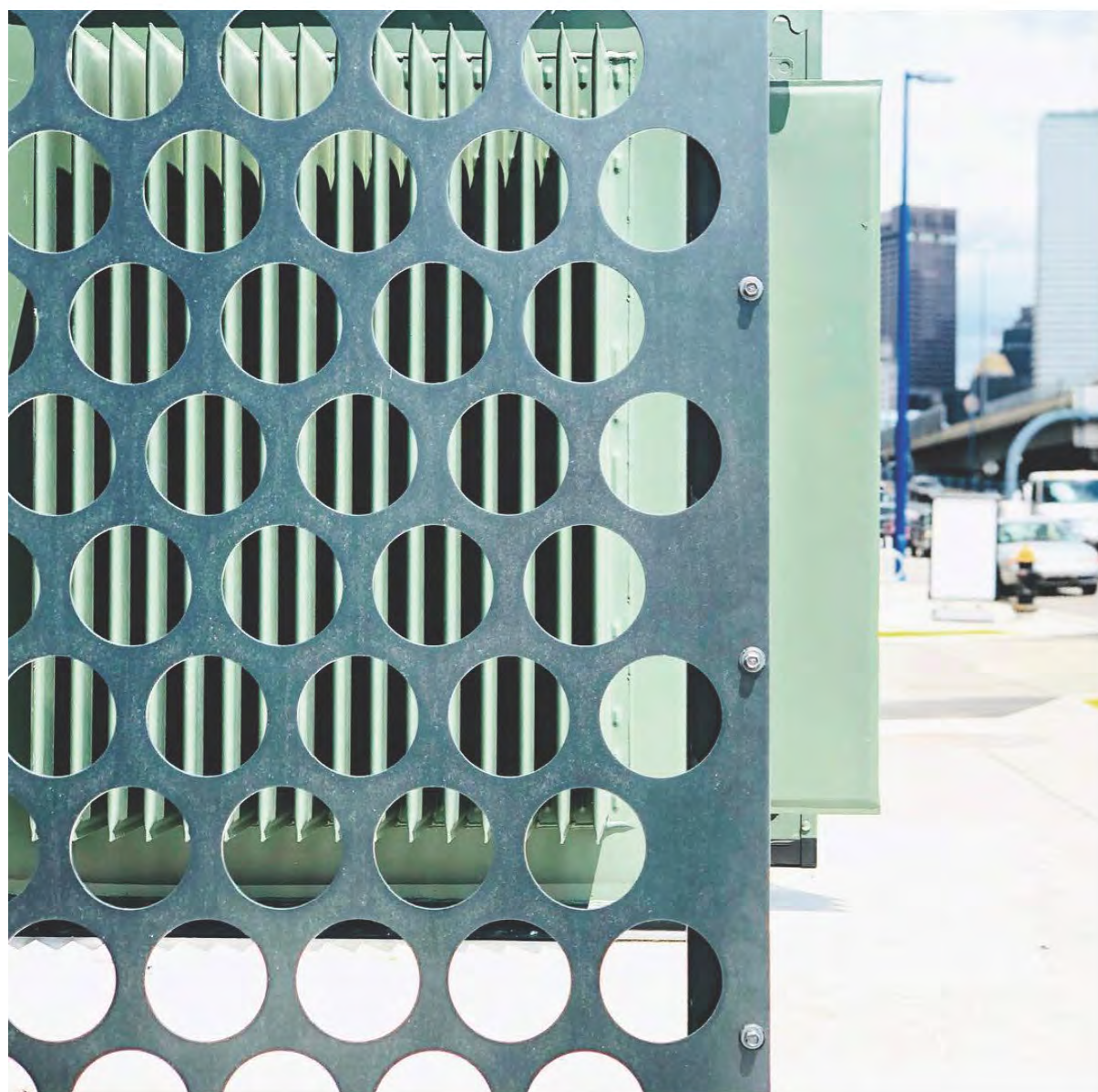




HB  
F  
TEXTILES

Upbeat 1036









# Uptick

The classic twill is reinvented with bold stripes creating a dimensional rhythm throughout Uptick. Varying hues and pops of color express a joyful sophistication in this linear pattern.

PATTERN	1041
COLORWAYS	5
APPLICATION	Upholstery, wrapped panel, systems panel
CONTENT	100% post consumer recycled polyester
WIDTH	52" W
REPEAT	27" H
WEIGHT	20.42 ounces per linear yard
FINISH	Alta™
BACKING	Acrylic
ABRASION	90,000 double rubs (W)
ORIGIN	United States
FLAME RESISTANCE	California TB 117-2013 Section 1 (Pass), Class A rated ASTM E-84 (unadhered)
MAINTENANCE	WS: Clean with upholstery shampoo or mild dry cleaning solvent. Bleach cleanable solutions up to 25% for cleaning difficult stains.
SUSTAINABILITY	100% recycled content. Third party certified, SCS Indoor Advantage™ Gold.
PRICE   GRADE	\$62.00/yard   HBF Grade H







HB  
TEXTILES

Uptick 1041



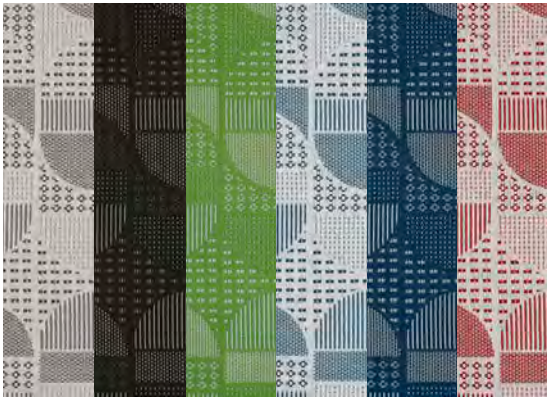






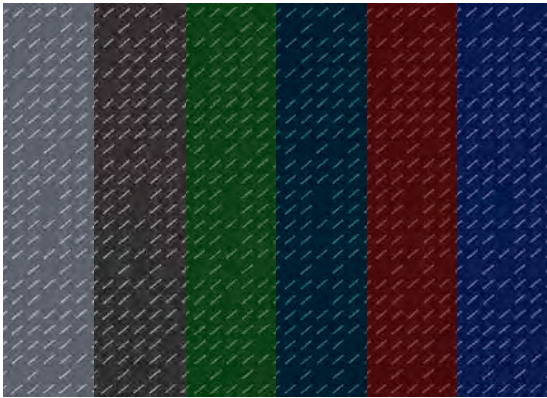


UP Collection Pattern Color Rotation



Uptown 1039

- 18 Crosswalk
- 89 Scaffold
- 63 Tree Top
- 54 Window
- 55 Playground
- 44 Firehouse



Upstart 1042

- 85 Townhouse
- 89 Scaffold
- 62 Garden
- 54 Window
- 74 Chimney
- 57 Harbor



Upscale 1040

- 18 Crosswalk
- 81 Front Stoop
- 89 Scaffold
- 22 Yellow Brick
- 62 Garden
- 54 Window
- 45 Storefront
- 44 Firehouse
- 55 Playground



Upbeat 1036

- 18 Crosswalk
- 20 Cobblestone
- 22 Yellow Brick
- 67 Transit
- 50 Skylight
- 54 Window
- 51 Alleyway
- 46 Bus Stop
- 44 Firehouse
- 58 Fountain
- 55 Playground
- 59 River
- 81 Front Stoop
- 85 Townhouse
- 89 Scaffold



Uptick 1041

- 18 Crosswalk
- 22 Yellow Brick
- 56 Neighborhood
- 45 Storefront
- 59 River

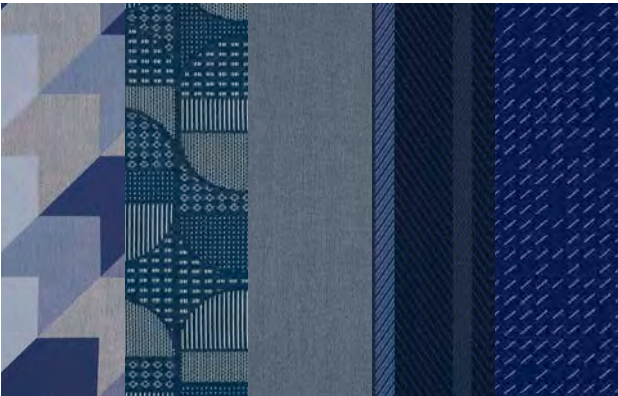


UP Collection Presentation Groups



Group A - Orange

1040-45	Upscale	Storefront
1039-18	Uptown	Crosswalk
1036-46	Upbeat	Bus Stop
1041-45	Uptick	Storefront
1042-74	Upstart	Chimney



Group B - Blue

1040-55	Upscale	Playground
1039-55	Uptown	Playground
1036-58	Upbeat	Fountain
1041-59	Uptick	River
1042-57	Upstart	Harbor

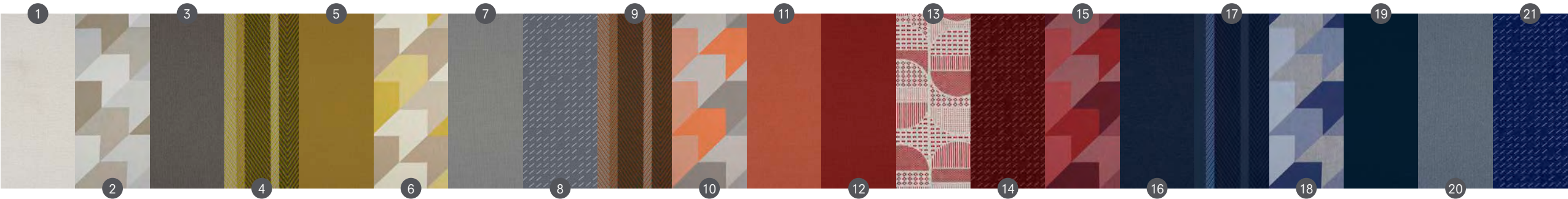


Group C - Aqua Green

1040-54	Upscale	Window
1039-54	Uptown	Window
1036-51	Upbeat	Alleyway
1042-54	Upstart	Window
1041-56	Uptick	Neighborhood



UP Collection Rotations



1	1036-18	Upbeat	Crosswalk	8	1042-85	Upstart	Townhouse	15	1040-44	Upscale	Firehouse
2	1040-18	Upscale	Crosswalk	9	1041-45	Uptick	Storefront	16	1036-59	Upbeat	River
3	1036-20	Upbeat	Cobblestone	10	1040-45	Upscale	Storefront	17	1041-59	Uptick	River
4	1041-22	Uptick	Yellow Brick	11	1036-46	Upbeat	Bus Stop	18	1040-55	Upscale	Playground
5	1036-22	Upbeat	Yellow Brick	12	1036-44	Upbeat	Firehouse	19	1036-55	Upbeat	Playground
6	1040-22	Upscale	Yellow Brick	13	1039-44	Uptown	Firehouse	20	1036-58	Upbeat	Fountain
7	1036-81	Upbeat	Front Stoop	14	1042-74	Upstart	Chimney	21	1042-57	Upstart	Harbor



22	1039-55	Uptown	Playground	29	1041-56	Uptick	Neighborhood	36	1036-85	Upbeat	Townhouse
23	1042-54	Upstart	Window	30	1036-67	Upbeat	Transit	37	1040-81	Upscale	Front Stoop
24	1036-54	Upbeat	Window	31	1040-62	Upscale	Garden	38	1036-89	Upbeat	Scaffold
25	1039-54	Uptown	Window	32	1039-63	Uptown	Tree Top	39	1039-89	Uptown	Scaffold
26	1036-51	Upbeat	Alleyway	33	1042-62	Upstart	Garden	40	1042-89	Upstart	Scaffold
27	1040-54	Upscale	Window	34	1039-18	Uptown	Crosswalk	41	1040-89	Upscale	Scaffold
28	1036-50	Upbeat	Skylight	35	1041-18	Uptick	Crosswalk				



**UP Collection**

**Kelly Harris Smith**