

Everyday Textures

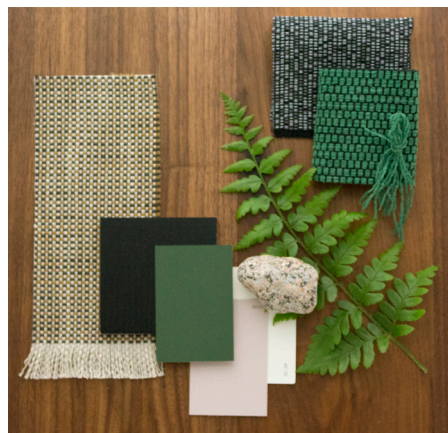
HBF  
TEXTILES



At HBF Textiles, we reveal the hand of the maker and the intentionality of design in everything we produce. Our finely crafted materials are an invitation to touch and explore.

# Everyday Textures

by HBF Textiles







## **HBF Textiles & Sustainability**

We approach sustainability from a variety of methods.

At the forefront of the charge is the utilization of rapidly renewable and recycled fibers. Our Everyday Textures incorporate cotton, post-consumer recycled polyester (the source of which is primarily plastic water bottles or PET bottles), and post-industrial recycled polyester.

Our goal at HBF Textiles is to reduce the amount of finishing on a fabric through the engineering of weaves structures and the use of solution dyed yarns which can lessen the need for additional chemical treatments.

The Everyday Textures are Healthier Hospitals (HH) V2 compliant and SCS Indoor Advantage™ Gold certified.



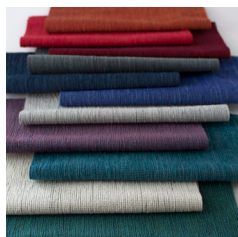
## Blink 1048

<b>APPLICATION</b>	Upholstery
<b>CONTENT</b>	62% post-consumer recycled polyester, 38% polyester
<b>WIDTH</b>	57" W
<b>BACKING</b>	Acrylic
<b>ABRASION</b>	75,000 double rubs (Wyzenbeek)
<b>FR RATING</b>	California TB 117-2013 Section 1 (Pass)
<b>MAINTENANCE</b>	WS: Clean with upholstery shampoo or mild dry cleaning solvents. Diluted bleach solutions up to 20% for cleaning difficult stains.
<b>SUSTAINABILITY</b>	62% recycled content. Third party certified, SCS Indoor Advantage™ Gold



## Checkmate 1043

<b>APPLICATION</b>	Upholstery
<b>CONTENT</b>	94% polyester, 4% post-industrial recycled polyester, 2% post-consumer recycled polyester
<b>WIDTH</b>	56" W
<b>BACKING</b>	Acrylic
<b>ABRASION</b>	63,000 double rubs (Wyzenbeek)
<b>FR RATING</b>	California TB 117-2013 Section 1 (Pass)
<b>MAINTENANCE</b>	WS: Clean with upholstery shampoo or mild dry cleaning solvents. Diluted bleach solutions up to 20% for cleaning difficult stains.
<b>SUSTAINABILITY</b>	6% recycled content. Third party certified, SCS Indoor Advantage™ Gold.



## Look-see 1044

<b>APPLICATION</b>	Upholstery
<b>CONTENT</b>	52% polyester, 31% post-industrial recycled polyester, 17% post-consumer recycled polyester
<b>WIDTH</b>	56" W
<b>BACKING</b>	Acrylic
<b>ABRASION</b>	100,000 double rubs (Wyzenbeek)
<b>FR RATING</b>	California TB 117-2013 Section 1 (Pass)
<b>MAINTENANCE</b>	WS: Clean with upholstery shampoo or mild dry cleaning solvents. Diluted bleach solutions up to 20% for cleaning difficult stains.
<b>SUSTAINABILITY</b>	48% recycled content. Third party certified, SCS Indoor Advantage™ Gold



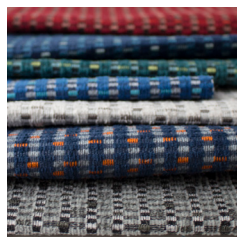
## Poppy 1047

<b>APPLICATION</b>	Upholstery
<b>CONTENT</b>	48% cotton, 37% post-consumer recycled polyester, 15% post-industrial recycled polyester
<b>WIDTH</b>	56" W
<b>BACKING</b>	Acrylic
<b>ABRASION</b>	60,000 double rubs (Wyzenbeek)
<b>FR RATING</b>	California TB 117-2013 Section 1 (Pass)
<b>MAINTENANCE</b>	S: Clean with water free dry cleaning solvent
<b>SUSTAINABILITY</b>	48% rapidly renewable content, 52% recycled content. Third party certified, SCS Indoor Advantage™ Gold



## Walkabout 1046

<b>APPLICATION</b>	Upholstery
<b>CONTENT</b>	41% polyester, 38% post-industrial recycled polyester, 21% post-consumer polyester
<b>WIDTH</b>	56" W
<b>BACKING</b>	Acrylic
<b>ABRASION</b>	63,000 double rubs (Wyzenbeek)
<b>FR RATING</b>	California TB 117-2013 Section 1 (Pass)
<b>MAINTENANCE</b>	WS: Clean with upholstery shampoo or mild dry cleaning solvents. Diluted bleach solutions up to 20% for cleaning difficult stains.
<b>SUSTAINABILITY</b>	59% recycled content. Third party certified, SCS Indoor Advantage™ Gold



## Zippy 1045

<b>APPLICATION</b>	Upholstery
<b>CONTENT</b>	79% polyester, 21% post-consumer recycled polyester
<b>WIDTH</b>	57" W
<b>REPEAT</b>	5 1/2" V x 2 1/2" H
<b>BACKING</b>	Acrylic
<b>ABRASION</b>	51,000 double rubs (Wyzenbeek)
<b>FR RATING</b>	California TB 117-2013 Section 1 (Pass)
<b>MAINTENANCE</b>	WS: Clean with upholstery shampoo or mild dry cleaning solvents. Diluted bleach solutions up to 20% for cleaning difficult stains.
<b>SUSTAINABILITY</b>	21% recycled content. Third party certified, SCS Indoor Advantage™ Gold

